



TROJAN SPECIALTY PRODUCTS

INSTALLATION INSTRUCTIONS

AG-82 AUTOMATIC GAS HEATER

1. Remove electrical components and trough by removing two flat head screws on ends of fountain. Remove access panel and replace with vented panel.

2. Remove a portion of the casing insulation as shown in Figure 1 (at least 8 inches vertical by 6 inches horizontal). This should be on the end of the unit that is opposite drainpipe for flue gases to escape. Access panel should also be on downwind side.

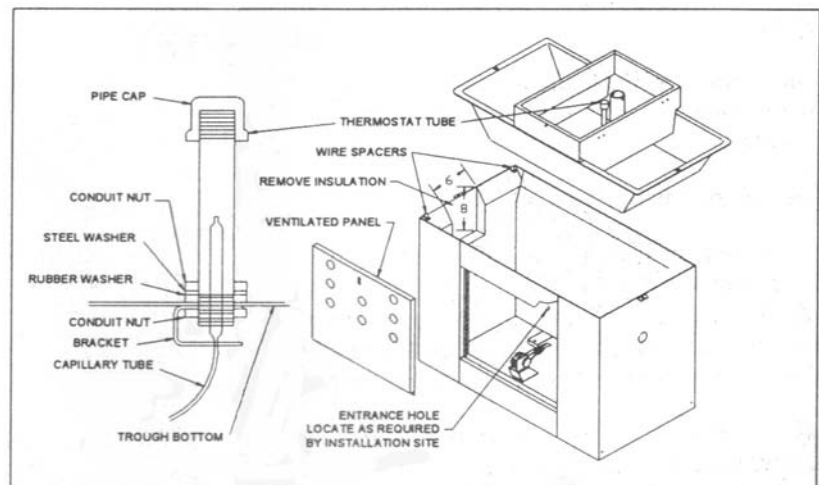


Figure 1

3. Raise the end of the trough that the insulation has been removed to install a piece of #9 gauge wire bent into a "V" shape (2 required), to space the trough above the casing to allow flue gases to escape. See Figure 1.

4. On new installations, it is desirable for gas line to enter under the concrete. If necessary, make an entrance hole in the casing for the gas supply line to enter. If gas line enters through casing side, there should be a protective conduit to prevent damage to copper tubing. See Figure 1.

5. Mount the burner as follows (see Figure 2):

- A. Combination models: Remove the burner from stand and position it on the edge of the lower trough, on the access panel side away from the upper trough drain spout and supply hose and lower valve.
- B. Cattle models: Set the gas burner on the stand provided and position approximately centered under the trough on the concrete.

6. Route the gas supply tubing into the casing to the gas supply valve. Make sure pipe is clean and use pipe joint compound on male threads only.

7. Install thermostat-sensing tube by routing capillary tube up thermostat tube, into trough. Thermostat tube should be completely submerged in water. Route capillary tube away from main burner.

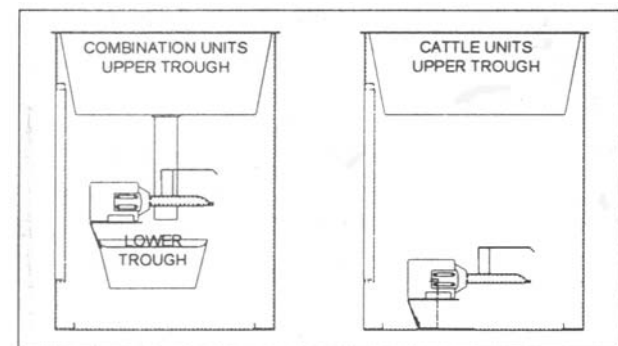


Figure 2

NOTES:

1. For installations with the burner a long distance from the gas source, or multiple burners on one gas supply, a two-stage regulation system should be considered, with a secondary regulator at the burner. See a qualified LP gas technician for their recommendation.
2. The 4060 BTU burner is equipped with a #73 (0.024" diameter) orifice for LP gas at a pressure of 11 inch water column. To use with natural gas, enlarge the pilot orifice with a #78 drill (0.016" diameter) and the burner orifice must be enlarged with a #61 drill (0.039" diameter). Gas pressure must be regulated to a pressure of 3 1/2 inch water column.

STORAGE

During extended periods when burner is not being used, it should be removed from the fountain and placed in an airtight container. **DO NOT COVER GAS VALVE (Unitrol) with plastic bag!** This could cause damage and result in replacing gas valve (Unitrol). All openings in burner and supply lines should be plugged to prevent contamination from moisture, insects, etc. For Unitrol maintenance and data see 66B Heater Instructions

PROCEDURE FOR LIGHTING OR RE-LIGHTING BURNER

1. Turn gas cock dial (2) to "OFF" position. See Figure 3.
2. Wait at least five minutes to allow gas that may have accumulated in burner compartment to dissipate.
3. Turn gas cock dial to "PILOT" position.
4. Depress and hold reset button (1) while lighting pilot burner flame. On initial startup it will take a little time to purge air from the gas line and valve. Allow pilot to burn at least 30 seconds before releasing reset button. Adjust pilot flame if necessary, as noted under "pilot burner adjustment" below.

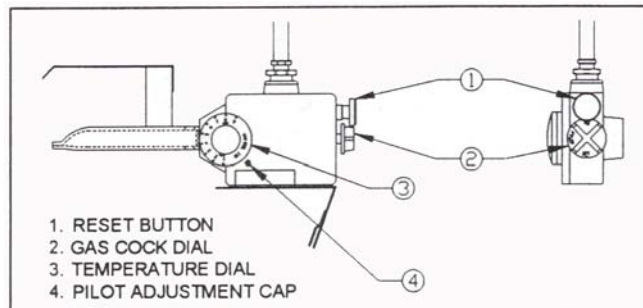


Figure 3

5. Turn gas cock dial to "ON" position and turn temperature dial (3) to desired position. Temperature Dial Markings correspond approximately to the following OFF temperatures:

DIAL POSITION	1*	2	3	4	5	6	7	8	9
TEMP. °F (110SS)	48°	52°	56°	60°	64°	68°	72°	76°	80°

* Suggested starting temperature

IMPORTANT: Do not adjust burner output with gas cock.

PILOT BURNER ADJUSTMENT

1. Remove pilot adjustment cap (4). See Figure 3.
2. Adjust pilot adjustment screw to provide proper size flame.
3. Replace pilot adjustment cap.

WARRANTY FOR TROJAN SPECIALTY PRODUCTS

TROJAN SPECIALTY PRODUCTS, warrants product to be free of defective materials and workmanship. Defective part(s) will be repaired or replaced, at the option of TROJAN SPECIALTY PRODUCTS. This warranty specifically excludes all labor and shipping charges.

This warranty does not apply to any appearance items, to any product whose exterior has been damaged or defaced, to any product subjected to misuse, abnormal service or handling, and to any products altered or repaired with other than original equipment manufacturers parts. The period of warranty begins at original date of purchase and extends for one year.

All warranty claims must be processed thru TROJAN SPECIALTY PRODUCTS.

Beck Sales Company., 'dba' TROJAN SPECIALTY PRODUCTS
10860 U.S. Hwy 50 — P.O.Box 1735 — Dodge City, Ks 67801
Toll Free: 800-279-1770 — Phone: 620-225-1770 — FAX: 620-225-6521
E-mail: info@becksales.net — Web: www.trojanlivestock.com