



TROJAN SPECIALTY PRODUCTS

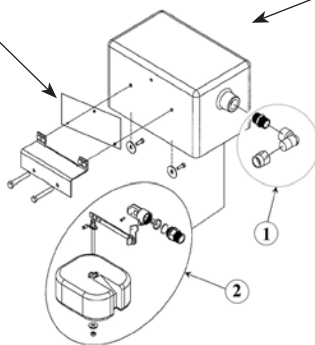
INSTALLATION INSTRUCTIONS

TROJAN STOCK TANK VALVE

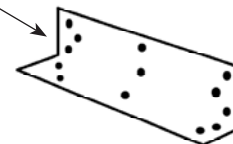
The Trojan Stock Tank Valve is designed to fit on either plastic or steel tanks. The single bracket that is included can be orientated one of two ways depending on the tank you are mounting the unit to. The following describes how this bracket should be mounted for either type of tank installation.

1. Place the backing plate on the inside of the blue valve housing. Align all three holes and place the two short bolts through the two bottom holes from the inside out. Ensure that the center hole lines up with the hole on the valve housing, as it provides ventilation to prevent a vacuum from forming in the valve chamber.
2. Mount the angle bracket with the short side of the bracket touching the valve housing for plastic tanks, and long side touching the housing for steel tanks. The angle bracket should be mounted so the bend of the bracket is below the mounting holes, not on top.
3. Align the bolts sticking through the backing plate, housing, and angle bracket. Use the provided lock washer and nuts to fasten the assembly.
4. To mount the unit to the tank, use the outer and center holes to bolt to the bracket to the tank. For plastic tanks there are a pair of holes on each end and in the center. You may use the set of holes close to the valve housing, or further out on the bracket whichever fits your tank better. For steel tanks there is only one set of holes. Use the angle bracket itself as a template to mark the three holes.
5. With a 5/16" bit, drill out the three pre-marked holes. **NOTE: FOR STEEL TANK HOLES MAY HAVE TO BE DRILLED AT AN ANGLE TO GO ALL THE WAY THROUGH THE RIM SO BOLTS MAY BE INSTALLED.**
6. Lay the bracket on top of the holes that you just drilled and insert the three 1/4-20 X 2 1/2 hex head screws. Apply the remaining lock washers and nuts to the bottom of the screws and tighten.

Backing Plate
(mount inside valve housing)



The drawing at left shows the angle bracket oriented for use with plastic tanks. For use on steel tanks, orient as shown below:



Item	Part #	Description
1	18144	Fittings
2	16991	Red Valve and Float Assembly

WARRANTY FOR TROJAN SPECIALTY PRODUCTS

TROJAN SPECIALTY PRODUCTS, warrants product to be free of defective materials and workmanship. Defective part(s) will be repaired or replaced, at the option of TROJAN SPECIALTY PRODUCTS. This warranty specifically excludes all labor and shipping charges.

This warranty does not apply to any appearance items, to any product whose exterior has been damaged or defaced, to any product subjected to misuse, abnormal service or handling, and to any products altered or repaired with other than original equipment manufacturers parts. The period of warranty begins at original date of purchase and extends for one year.

All warranty claims must be processed thru TROJAN SPECIALTY PRODUCTS.

Beck Sales Company., 'dba' TROJAN SPECIALTY PRODUCTS
 10860 U.S. Hwy 50 — P.O. Box 1735 — Dodge City, Ks 67801
 Toll Free: 800-279-1770 — Phone: 620-225-1770 — FAX: 620-225-6521
 E-mail: info@becksales.net — Web: www.trojanlivestock.com